



Dear Friend,

This is the second newsletter to update you on Operation Cast Lead.

We are now entering the third week of the operation, each day bringing new developments from the home front and the field.

This newsletter features updated statistics and a section on Hamas's use of civilians as human shields and a map of how Hamas booby-trapped a neighborhood.

Learn more by following the links and download high resolution photos taken this week of IDF troops in the field.

We thank you for staying informed.

Sincerely,
The IDF Spokesperson Unit



Next 

Israel's Home Front: After Two Weeks of Attacks



950,000 Israelis now live in range of Hamas rocket fire

The number of Israeli civilian casualties is relatively low due to the fact that civilians follow the emergency instructions provided by the Home Front Command and seek immediate shelter in protected areas.

13 Israelis killed

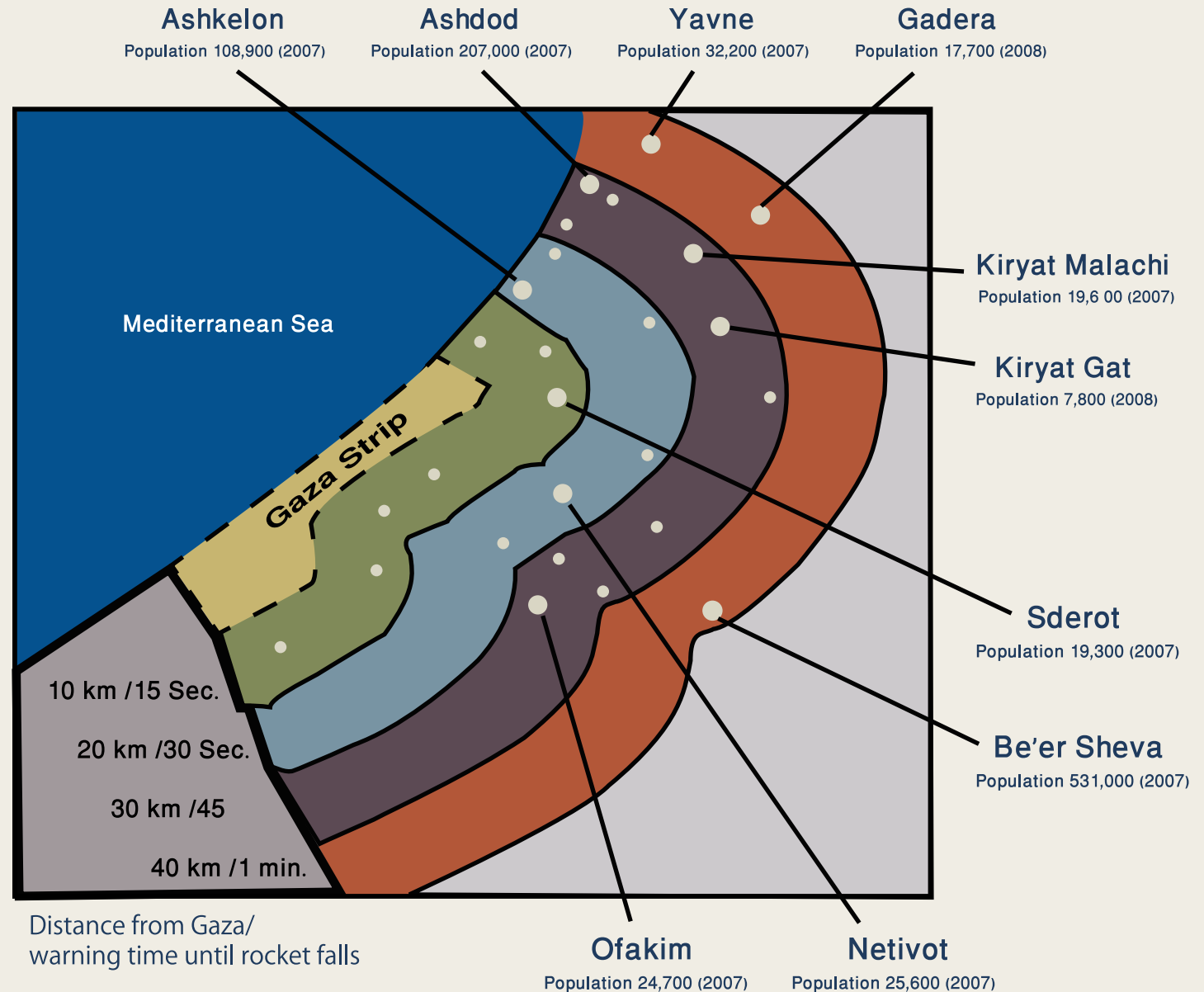
3 civilians
10 soldiers

346 Israelis wounded

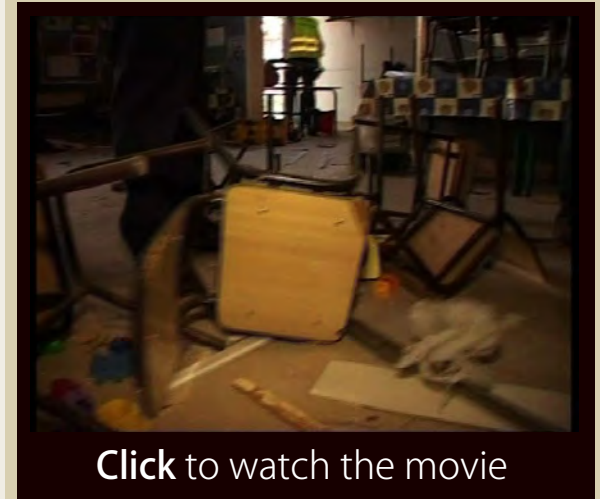
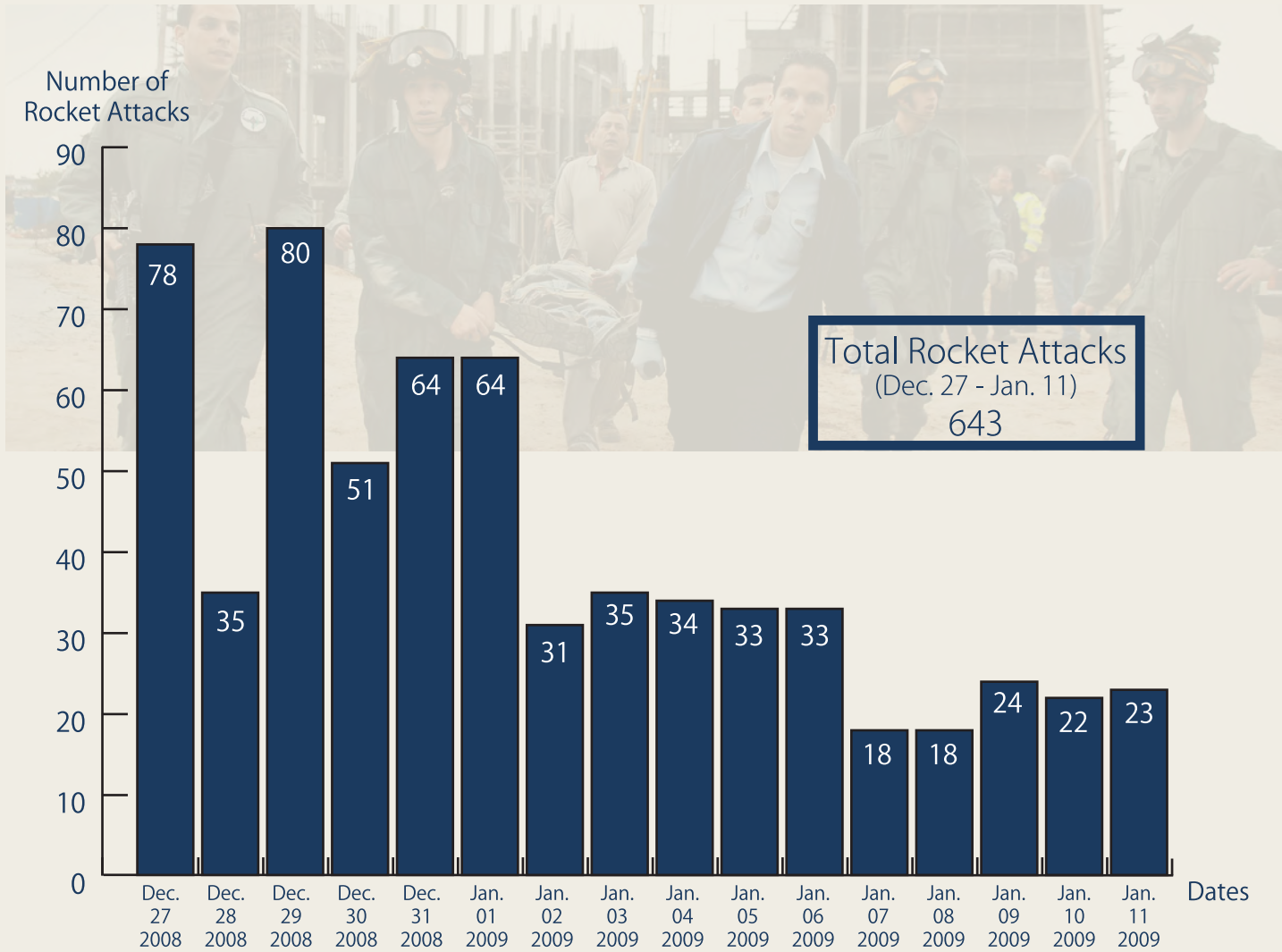
234 civilians
6 severely wounded
8 moderately wounded
39 lightly wounded
181 suffer from PTSD

112 soldiers

2 critically wounded
5 severely wounded
7 moderately wounded
98 lightly wounded



Israel's Home Front: After Two Weeks of Attacks



[Click to watch the movie](#)

Hamas attacks Israel with rockets

Hamas Sniper and Explosives Layout Map



This map was confiscated on Wednesday (Jan. 7) by IDF Paratrooper Brigade forces operating in the northern Gaza Strip.

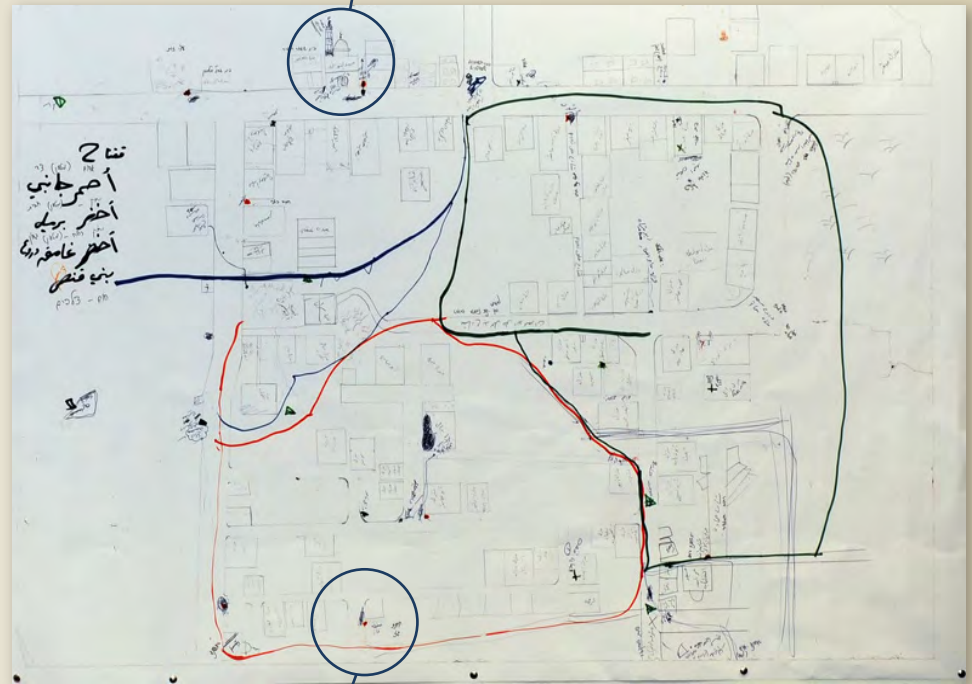
The map illustrates the Al-Tatraa neighborhood in Gaza City divided into three areas of operation.

Hamas terror operatives plant IEDs (improvised explosive devices) at the entrances to public buildings. They booby-trap homes and turn places of worship into military posts.

The dots on the map indicate where Hamas terror operatives planted IEDs throughout the neighborhood, with the colors indicating the type of IED.

Additional markings show sniper positioning next to mosque, tunnels dug and an IED planted at a gas station.

A sniper positioned by a mosque and the direction he is aiming



An IED planted by Hamas at a gas station located in a residential area



[Click to watch the movie](#)

Civilians gathered on targeted rooftop to protect Hamas terrorists and prevent an IDF strike.



[Click to watch the movie](#)

Entrance to an arms smuggling tunnel in the floor of a Gazan residence.

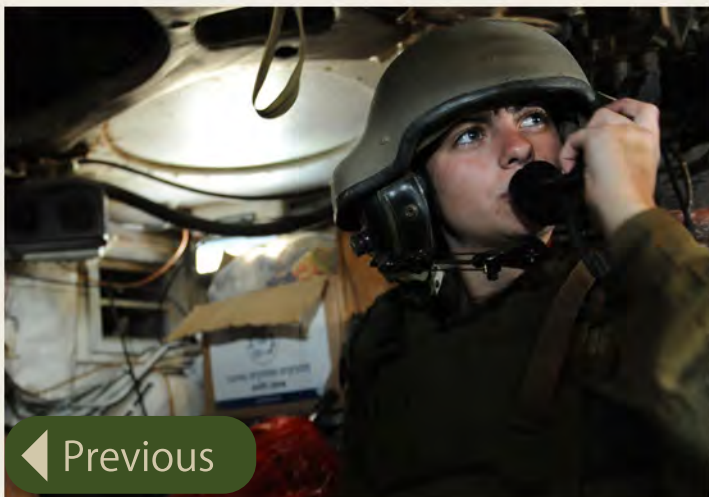


[Click to watch the movie](#)

Children drafted to assist Hamas terror operatives.

[Click to Download the Movies:](#) 1 2

[Click to Enter the IDF English Website](#)



◀ Previous

Watch the movie
"Hamas' Escalation to Confrontation"